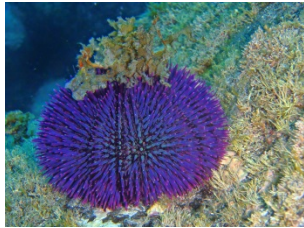




## 4th E-Newsletter

- **NetBiome shows how to improve research and management of threatened biodiversity in Europe's overseas entities**
  - **NetBiome-CSA maps out research priorities and policy actions for enhanced management of overseas biodiversity**
  - **NetBiome Biodiversity Toolbox links stakeholders and enhances communication in EU overseas entities**
  - **Net-Biome ERA-Net funded projects strengthened contacts between scientists and addressed societal needs**
  - **A NetBiome roadmap to boost biodiversity research cooperation in EU overseas**
-



## NetBiome shows how to improve research and management of threatened biodiversity in Europe's overseas entities

This newsletter gives you a glimpse of the NetBiome-CSA achievements and demonstrates how they will support ongoing and new network actions in biodiversity management in European overseas areas. [\[Read more\]](#)

©José Azevedo



## NetBiome-CSA maps out research priorities and policy actions for enhanced management of overseas biodiversity

A major success of the NetBiome-CSA project has been the development and publication of policy recommendations and priorities for research cooperation in biodiversity management in the EU Overseas. [\[Read more\]](#)

©NetBiome-CSA



## NetBiome Biodiversity Toolbox links stakeholders and enhances communication in EU overseas entities

The NetBiome-CSA Biodiversity Toolbox is a “One Stop Shop” for biodiversity management. [\[Read more\]](#)

©NetBiome-CSA



## Net-Biome ERA-Net funded projects strengthened contacts between scientists and addressed societal needs

NetBiome ERA-Net funded researchers have been successful in strengthening partnerships, bringing together complementary skills and expertise, and producing good science enhancing the research that is developed in EU overseas.[[Read more](#)]

©NetBiome ERA-Net



## A NetBiome roadmap to boost biodiversity research cooperation in EU overseas

The NetBiome network grew from scratch almost 10 years ago and has become a unique example of a research network build by and for the EU overseas. The strong commitment of the network members will allow it to face new challenges in order to boost biodiversity research cooperation in EU overseas.[[Read more](#)]

©NetBiome-CSA

© NetBiome - CSA

To unsubscribe the newsletter, please reply to this email with the word unsubscribe.

[Disclaimer](#) · [Contact](#)